

PLANNING COMMISSION APPROVAL:

City of San Diego 12-13-83  
Date of Decision: 12-13-83  
By Commission: [Signature]

STATE OF CALIFORNIA  
COUNTY OF SAN DIEGO  
CITY OF SAN DIEGO  
PLANNING COMMISSION



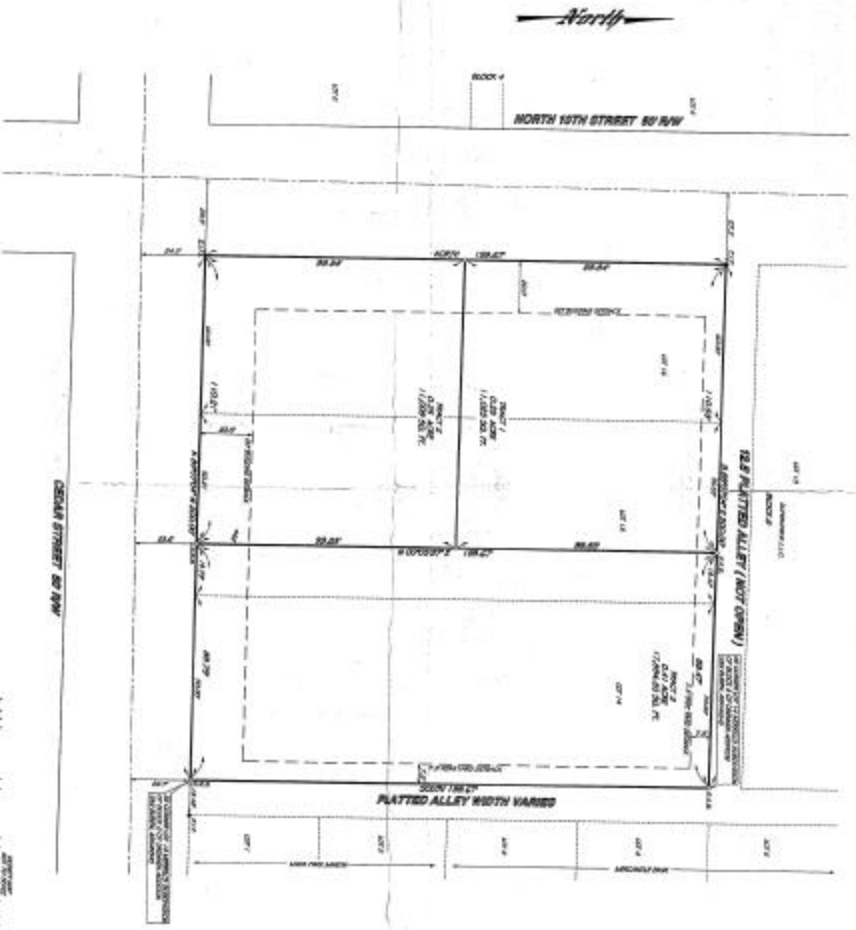
CITY CLERK APPROVAL:  
Date and Co. Clerk Signature: \_\_\_\_\_  
City Clerk: [Signature]  
Date: 12-13-83  
By Commission: [Signature]

TOTAL ACRES OF SUBDIVISION = 0.91 ACRE  
PROPOSED USE OF LAND = RESIDENTIAL  
EXISTING ZONING R3 MULTIFAMILY

# AVILA TRACTS 1, 2 & 3

AVILA TRACTS 1, 2 & 3  
APRIL 1984  
CITY OF SAN DIEGO

THIS PLAN IS A PART OF A SET OF ARCHITECTURAL DRAWINGS FOR THE AVILA TRACTS 1, 2 & 3, AND IS TO BE USED IN CONNECTION WITH THE CITY OF SAN DIEGO PLANNING COMMISSION APPROVAL.



NOTES:  
1. THIS IS A PART OF A SET OF ARCHITECTURAL DRAWINGS FOR THE AVILA TRACTS 1, 2 & 3, AND IS TO BE USED IN CONNECTION WITH THE CITY OF SAN DIEGO PLANNING COMMISSION APPROVAL.  
2. THE CITY OF SAN DIEGO PLANNING COMMISSION HAS REVIEWED THIS PLAN AND HAS APPROVED IT FOR THE CITY OF SAN DIEGO.  
3. THE CITY OF SAN DIEGO PLANNING COMMISSION HAS REVIEWED THIS PLAN AND HAS APPROVED IT FOR THE CITY OF SAN DIEGO.  
4. THE CITY OF SAN DIEGO PLANNING COMMISSION HAS REVIEWED THIS PLAN AND HAS APPROVED IT FOR THE CITY OF SAN DIEGO.



DATE: 12-13-83  
BY: [Signature]  
CITY CLERK

DATE: 12-13-83  
BY: [Signature]  
CITY CLERK

CONTACT: JAW BRANNING - GIBBY COMPANY, L.L.C.  
ADDRESS: 102 N. LAKE STREET  
SAN DIEGO, CA 92101  
PHONE: (619) 281-2512

Subdivided Land, San Diego, 12-13-83